

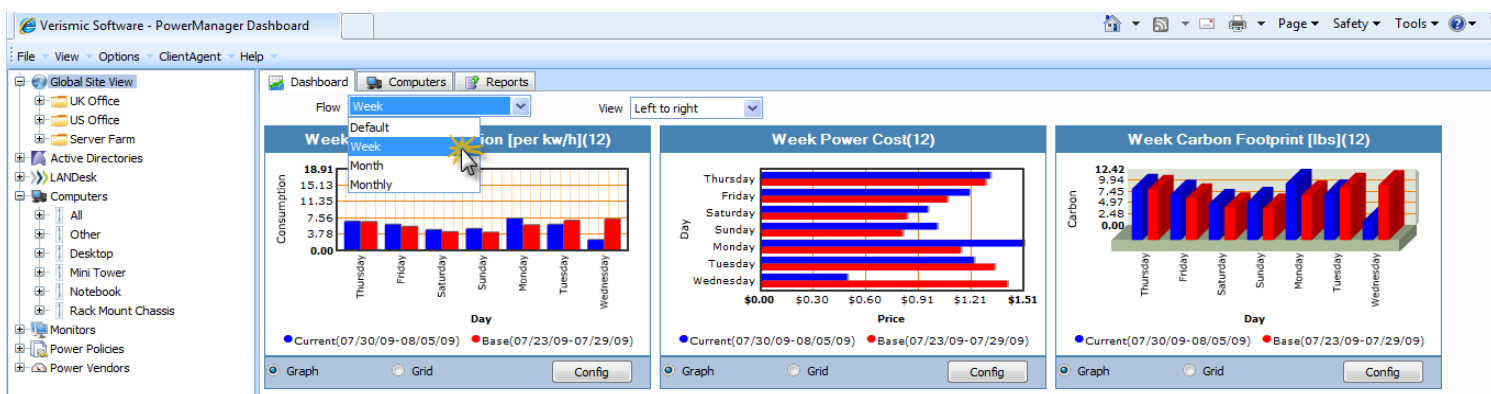
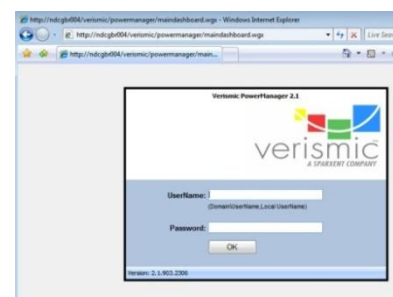


Verismic Power Manager™ Solution Brief

This document provides an overview of the Verismic Power Manager™ technical solution for Enterprise PC Power Management. Verismic Power Manager™ is designed to give advanced control over the PC estate however large or distributed that estate may be.

Web-Based Management

Designed for distributed environments the Verismic Power Manager™ console provides easy and secure access via the web—browser. When in the console, powerful hierarchical navigation is combined with dynamic dashboards to present key data to the user filtered by the particular location or hardware types they are interested in with little or no administrative overhead. Verismic Power Manager™ also provides more than 100 context-sensitive reports.



Hosted PC Power Management or Managed Services

Verismic Power Manager™ is the only dedicated PC Power Management solution designed to deliver functionality as an on-premise implementation or as a hosted implementation.

The requirement to invest in infrastructure may be a barrier to adoption for smaller or highly distributed organizations; Verismic Power Manager™ removes this obstacle with true internet manageability and the option for the entire service to be delivered either as a hosted system requiring zero-infrastructure, or as a fully managed service for your organization.

The Financial Business case can be made even simpler to justify with monthly rental options.

Managed Service providers can implement and use Verismic Power Manager to cost-effective deliver PC Power Management to multiple clients from centrally hosted shared infrastructure without needing to install and administer individual systems for each client environment.

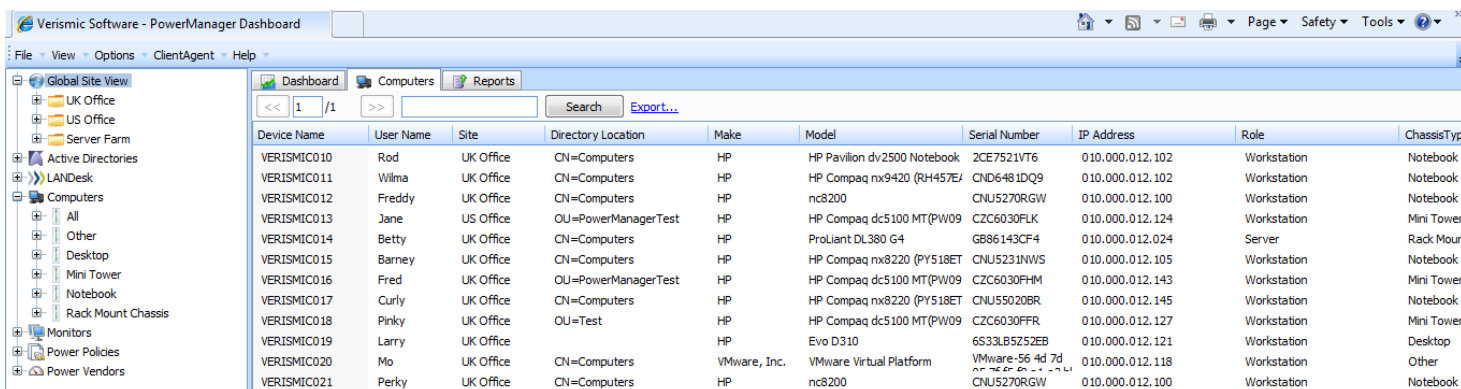
Clear Navigation Interface

- 1 - Context Sensitive Dashboards, Views, Settings, Policies, & Reporting
- 2 - Auto-Populating Groups for Low Administration
- 3 - Breakdown by Chassis/Vendor/Model in all Views
- 4 - Live Active Directory Integration (No Imports)
- 5 - Systems Management Integrations
- 6 - Hardware, Geographical, & Active Directory Data Analysis/Policy Application
- 7 - Monitor(s) Detection, Usage Tracking, & Data Analysis
- 8 - Multiple Power Policy Support with Context Sensitive Behaviour Modifications
- 9 - Multi-Vendor & Multi-Currency Support

Designed to reduce the learning curve associated with management tools and to take full advantage of navigation structures, the Verismic Power Manager™ interface provides access to all areas of the solution via the intuitive, fully web-based interface.

Detailed System Information

At a glance, key data about systems is available to the operator.

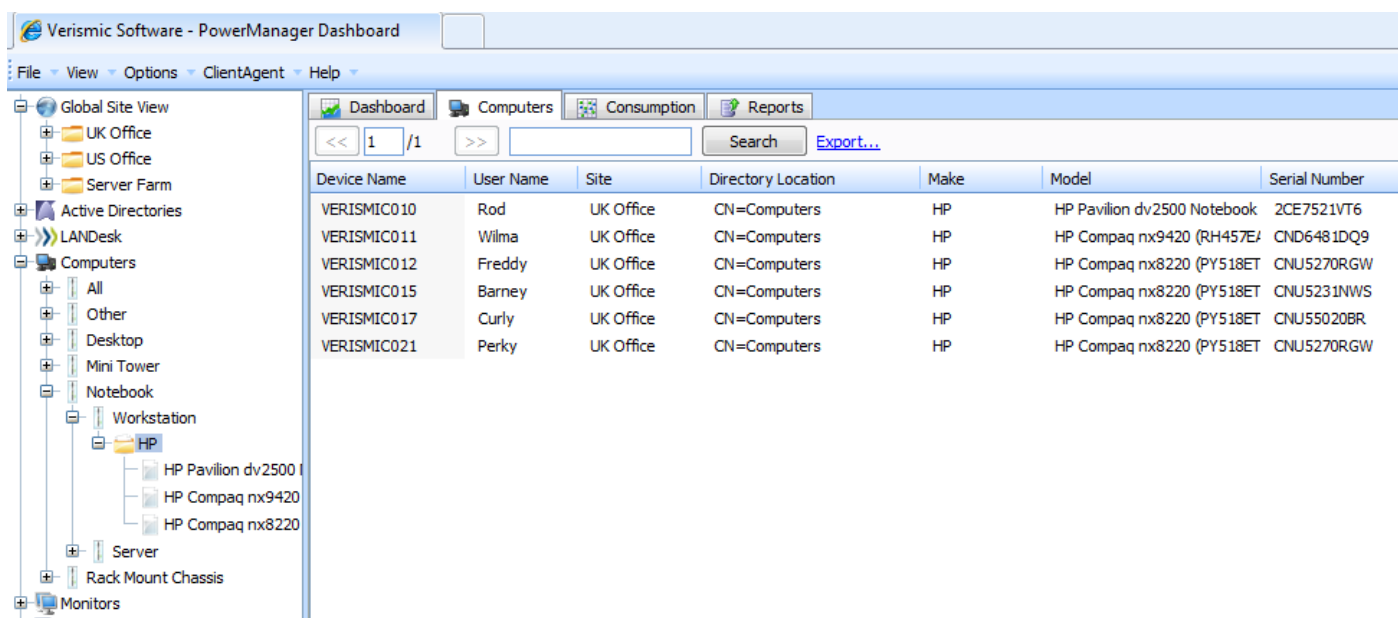


Device Name	User Name	Site	Directory Location	Make	Model	Serial Number	IP Address	Role	ChassisType
VERISMIC010	Rod	UK Office	CN=Computers	HP	HP Pavilion dv2500 Notebook	2CE7521VT6	010.000.012.102	Workstation	Notebook
VERISMIC011	Wilma	UK Office	CN=Computers	HP	HP Compaq nx9420 (RH457E/	CND6481DQ9	010.000.012.102	Workstation	Notebook
VERISMIC012	Freddy	UK Office	CN=Computers	HP	nc8200	CNU5270RGW	010.000.012.100	Workstation	Notebook
VERISMIC013	Jane	US Office	OU=PowerManagerTest	HP	HP Compaq dc5100 MT(P/W09	CZC6030FLK	010.000.012.124	Workstation	Mini Tower
VERISMIC014	Betty	UK Office	CN=Computers	HP	ProLiant DL380 G4	GB86143CF4	010.000.012.024	Server	Rack Moun
VERISMIC015	Barney	UK Office	CN=Computers	HP	HP Compaq nx8220 (PY518ET	CNU5231NWS	010.000.012.105	Workstation	Notebook
VERISMIC016	Fred	UK Office	OU=PowerManagerTest	HP	HP Compaq dc5100 MT(P/W09	CZC6030FHM	010.000.012.143	Workstation	Mini Tower
VERISMIC017	Curly	UK Office	CN=Computers	HP	HP Compaq nx8220 (PY518ET	CNU55020BR	010.000.012.145	Workstation	Notebook
VERISMIC018	Pinky	UK Office	OU=Test	HP	HP Compaq dc5100 MT(P/W09	CZC6030FFR	010.000.012.127	Workstation	Mini Tower
VERISMIC019	Larry	UK Office		HP	Evo D310	6S3LB5Z5ZEB	010.000.012.121	Workstation	Desktop
VERISMIC020	Mo	UK Office	CN=Computers	VMware, Inc.	VMware Virtual Platform	VMware-56 4d 7d	010.000.012.118	Workstation	Other
VERISMIC021	Perky	UK Office	CN=Computers	HP	nc8200	CNU5270RGW	010.000.012.100	Workstation	Notebook

The Verismic Power Manager™ agent collects valuable inventory data for use in grouping systems. Full visibility is provided through the navigation trees and through the computer grid views that allow drill-down capability to individual systems.

Detailed Hardware Navigation

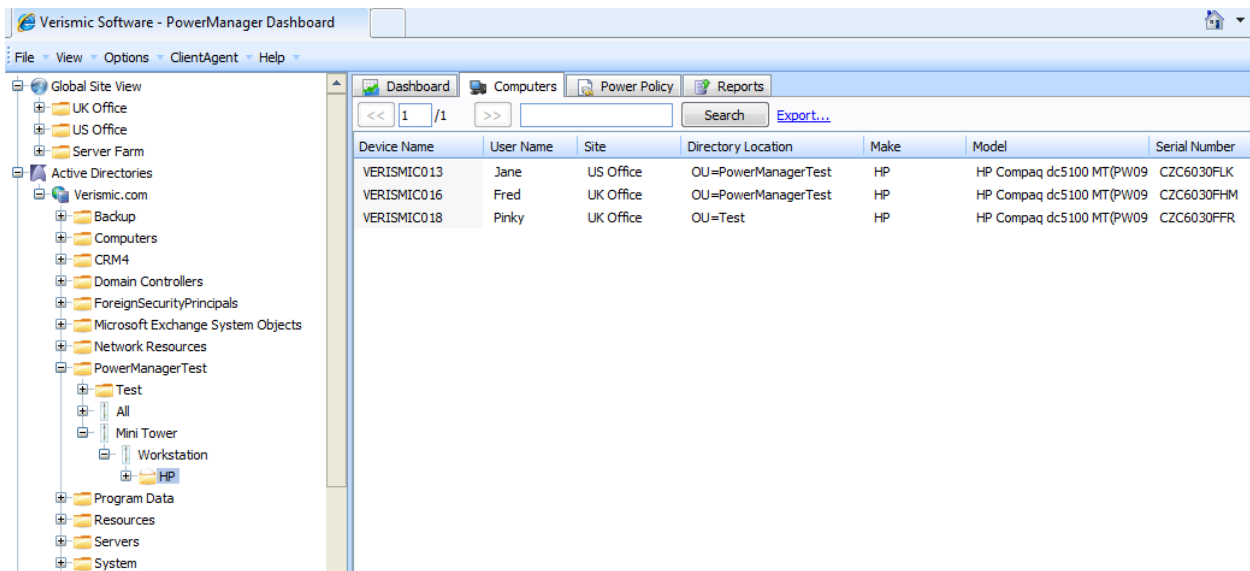
The collected detail is used to intuitively group systems by their operating system type, their chassis type, and by their manufacturer and model. This data is used in each navigation area and allows for accurate filtering and reporting of systems.



Device Name	User Name	Site	Directory Location	Make	Model	Serial Number
VERISMIC010	Rod	UK Office	CN=Computers	HP	HP Pavilion dv2500 Notebook	2CE7521VT6
VERISMIC011	Wilma	UK Office	CN=Computers	HP	HP Compaq nx9420 (RH457E/	CND6481DQ9
VERISMIC012	Freddy	UK Office	CN=Computers	HP	HP Compaq nx8220 (PY518ET	CNU5270RGW
VERISMIC015	Barney	UK Office	CN=Computers	HP	HP Compaq nx8220 (PY518ET	CNU5231NWS
VERISMIC017	Curly	UK Office	CN=Computers	HP	HP Compaq nx8220 (PY518ET	CNU55020BR
VERISMIC021	Perky	UK Office	CN=Computers	HP	HP Compaq nx8220 (PY518ET	CNU5270RGW

Active Directory Integration

The Active Directory in many environments is a pre-existing goldmine of business information. Direct integration allows for the presentation of data as well as the application of costs and power policies to be performed against Active Directory ensuring that Verismic Power Manager™ requires no more administration than that already performed to maintain the Active Directory structure.



Device Name	User Name	Site	Directory Location	Make	Model	Serial Number
VERISMIC013	Jane	US Office	OU=PowerManagerTest	HP	HP Compaq dc5100 MT(PW09	CZC6030FLK
VERISMIC016	Fred	UK Office	OU=PowerManagerTest	HP	HP Compaq dc5100 MT(PW09	CZC6030FHM
VERISMIC018	Pinky	UK Office	OU=Test	HP	HP Compaq dc5100 MT(PW09	CZC6030FFR

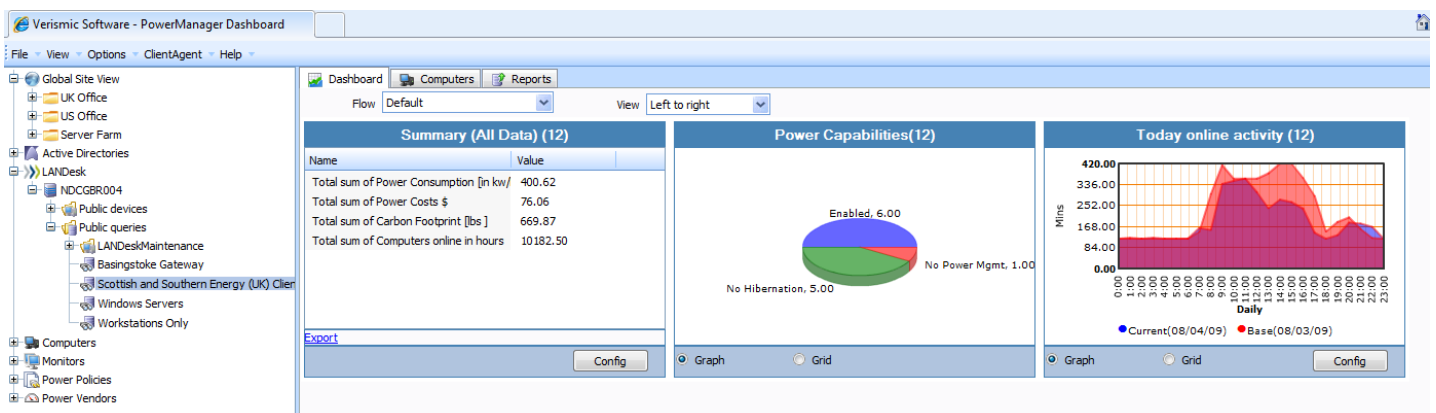
Cached Active Directory Mode

Cached Active Directory Mode allows integration even if direct communication to the directory tree is unavailable. Examples include, shared services implementation or hosted systems where LAN, WAN, or VPN connections are not available.

Data collected from managed devices is used to automatically build the directory structure for use in reporting and targeting and ensures complete service coverage even in complex environments without any load on the Active Directory at all.

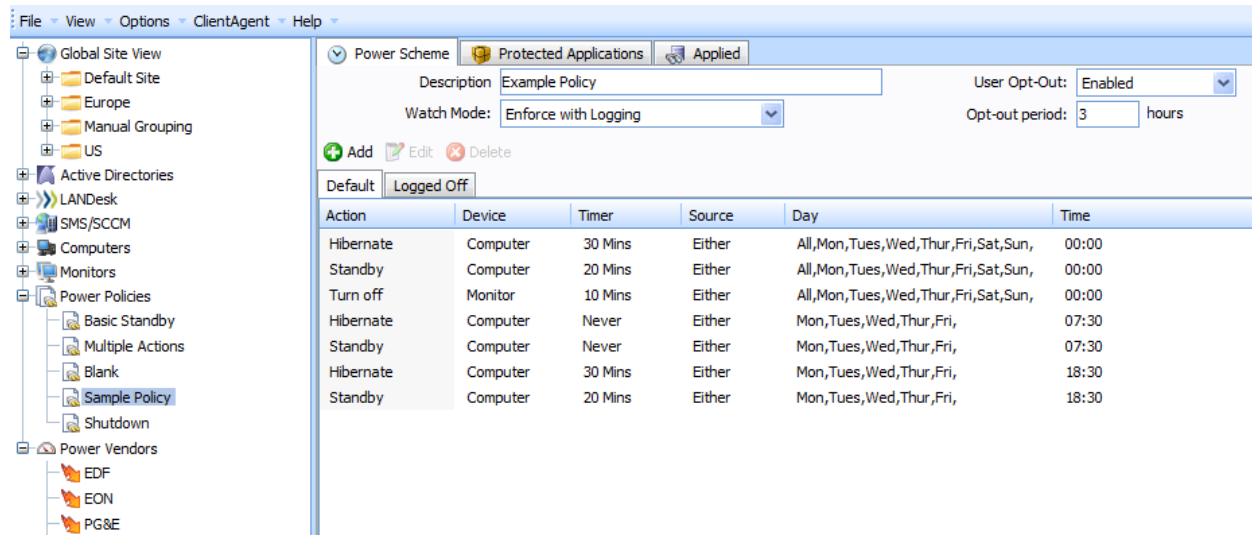
Systems Management Integration

For those environments with an existing investment in Systems Management such as Microsoft SCCM or LANDesk Software, Verismic Power Manager™ leverages the data in order to allow increased granularity of reporting as in the example below.



Granular Power Policy Control

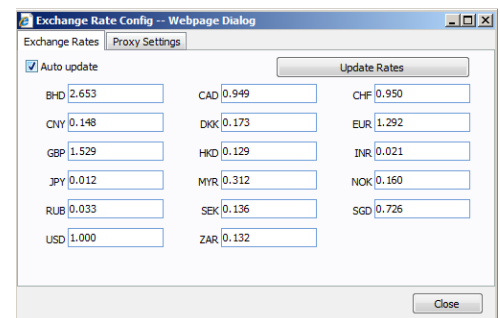
Going above and beyond the capabilities of standard Windows power policies, Verismic Power Manager™ enables policies to be applied that adapt to the business needs. If your business closes over a weekend more aggressive power policies can be applied; if your business has known periods of downtime such as the end of a shift, policies can adapt down to the granularity of a minute to provide the correct level of power management to support your business.

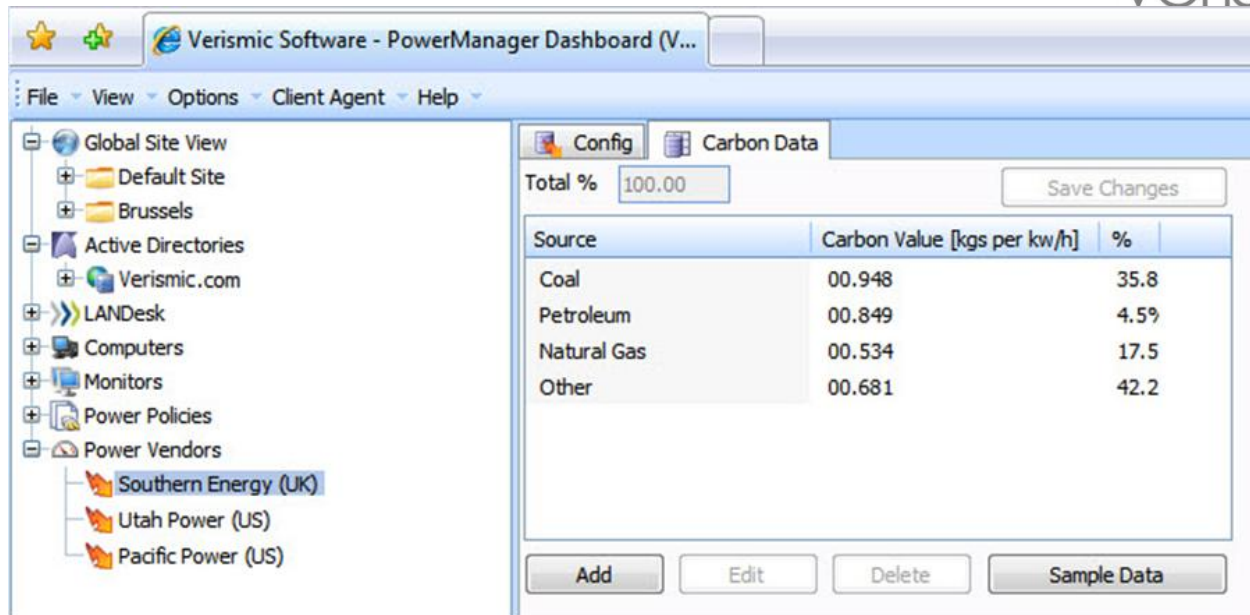


In addition, Verismic Power Manager™ also allows different actions when users are logged on compared to when no users are logged on and control over Power- Up/Down without the need for Wake-On-LAN or vPro technologies to ensure systems are up and running ready for their users reducing the impact of system restarts.

Multiple Vendor, Multi-Currency and Carbon Emission Data Support

Larger or more distributed environments may have various power vendors and these may operate in different currencies. Verismic Power Manager™ allows the use of multiple vendors to ensure calculations are based on the regional costs for power. To ensure international compatibility, Verismic Power Manager™ also automatically handles currencies including daily exchange rate updates and supports true historical local currency data rather than values based on the exchange rate at time of reporting.





Since each vendor will have a different power generation model, Verismic Power Manager™ allows for each vendor to have their generation sources listed along with their emission levels. For those working to reduce emissions as well as costs, this is a vital component for reporting and planning.

Automatically Updating Content Services

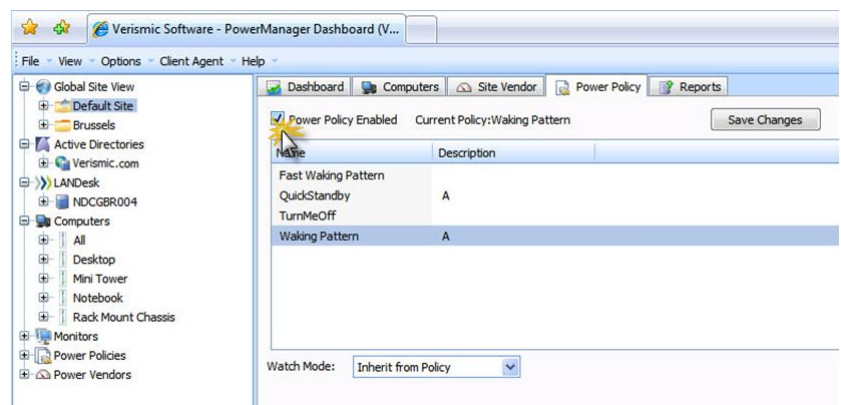
A unique component of Verismic Power Manager™ is the provision of centrally updated content that can be used by you to keep your system up to date without the administration overhead. By delivering content such as Manufacturer/model consumption levels for PCs and Monitors and the continuing development of other content services, Power Manager provides continued support for you and your environment.

As a valued participant in PC Power Management, information you discover can be share voluntarily with your peers so you can be an active participant in the community.

Power Policies with Inheritance

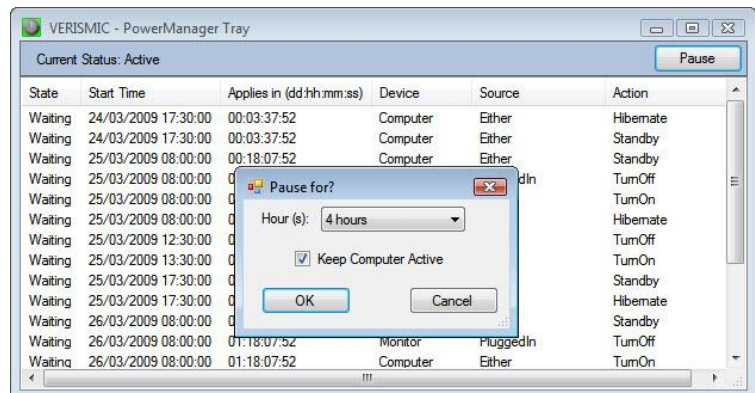
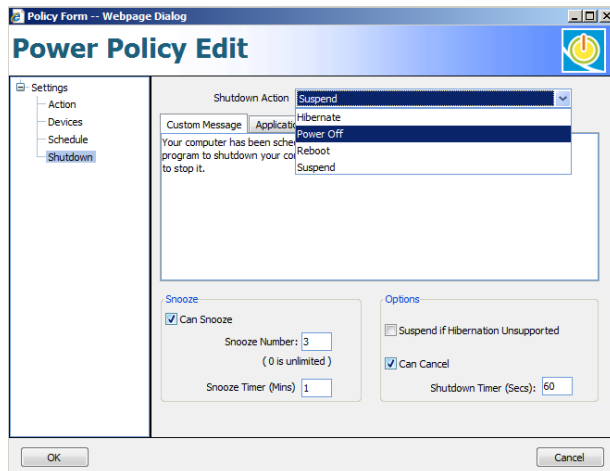
Regions, Departments, and Individuals all have differing business needs. With the advanced hierarchical model employed by Verismic Power Manager™, policies may be applied at any level with the knowledge that systems further down the tree will inherit policy settings.

Policies may be applied based on Geographical Groupings or directly against Active Directory containers ensuring that systems receive the policies most suited to their business use.



Flexible User Interaction and User Opt-Out

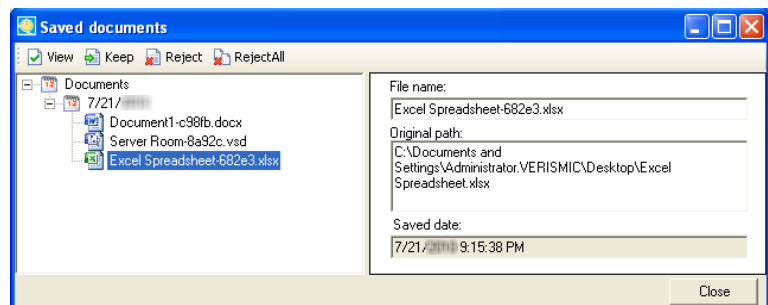
The application of power policies can impact users in their work and it is therefore essential to be able to co-exist with user needs.



End user interaction gives the user the ability to postpone actions (if enabled) and the Power Manager Tray gives the flexibility for users to temporarily opt-out of power management for specific needs such as late working or extended presentations.

Safe Application Shutdown

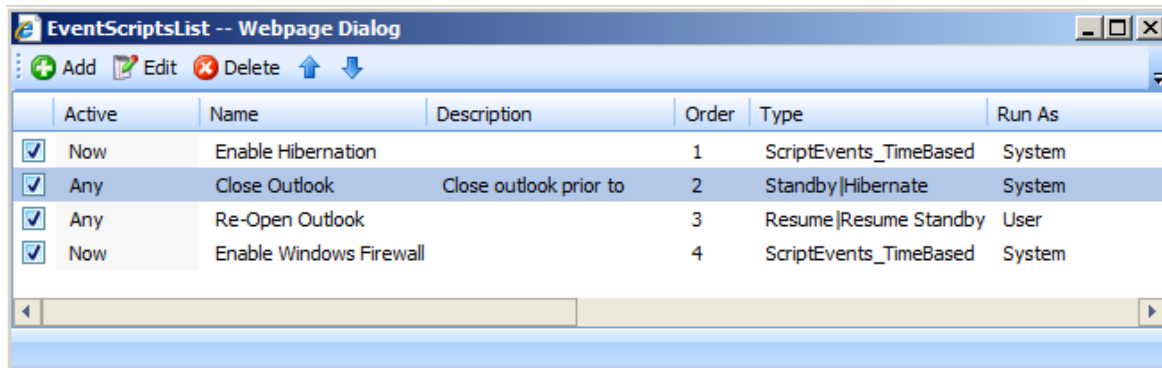
To reduce the potential impact of power policies on users they may not be experienced with PCs power down or off, Verismic Power Manager™ can control when systems are being powered off or rebooted, detect if there are open documents and save them to prevent data loss for users.



Safe Shutdown reduces the risk of user data loss, minimizes disruption and simplifies the introduction of power policies. When combined with the power of Pre & Post scripting, Verismic Power Manager™ delivers comprehensive system state control for PC Power Management projects.

Pre & Post Event Application Scripting

An essential component to control the configuration of your devices and to handle the variety of environmental considerations that exist, Verismic Power Manager™ allows for the targeting of commands or custom scripts to launch immediately, after pre-scheduled times, prior to the initiation of a power saving event, and even on the resuming from a power event to control the state of the device in a way that supports effective and safe power management.

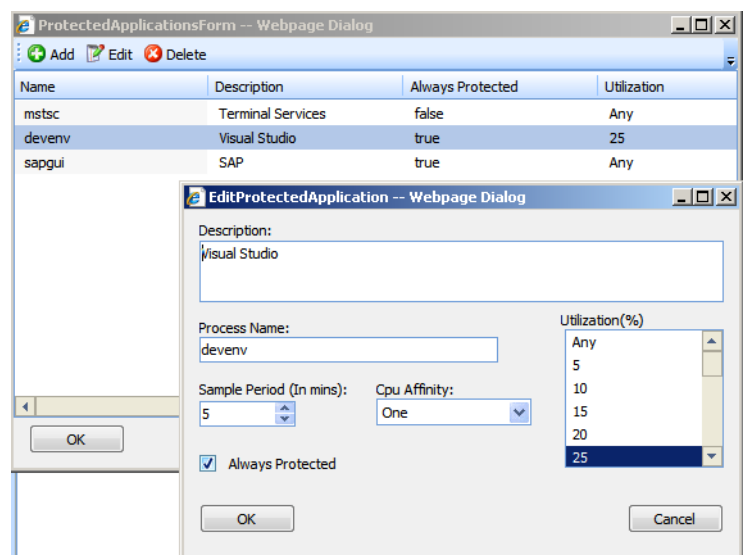
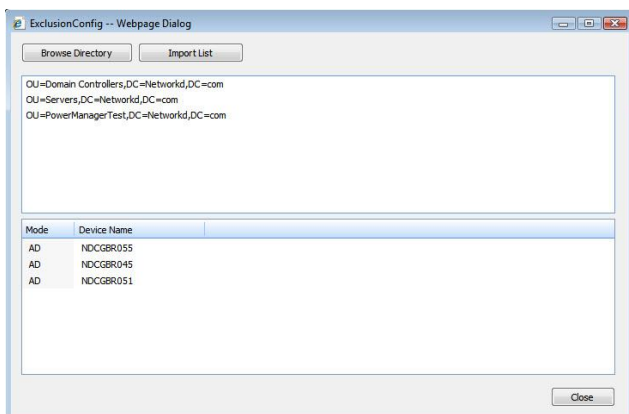


Active	Name	Description	Order	Type	Run As
<input checked="" type="checkbox"/>	Now	Enable Hibernation	1	ScriptEvents_TimeBased	System
<input checked="" type="checkbox"/>	Any	Close Outlook	2	Standby Hibernate	System
<input checked="" type="checkbox"/>	Any	Re-Open Outlook	3	Resume Resume Standby	User
<input checked="" type="checkbox"/>	Now	Enable Windows Firewall	4	ScriptEvents_TimeBased	System

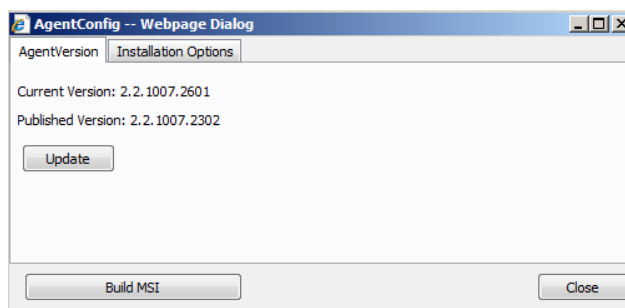
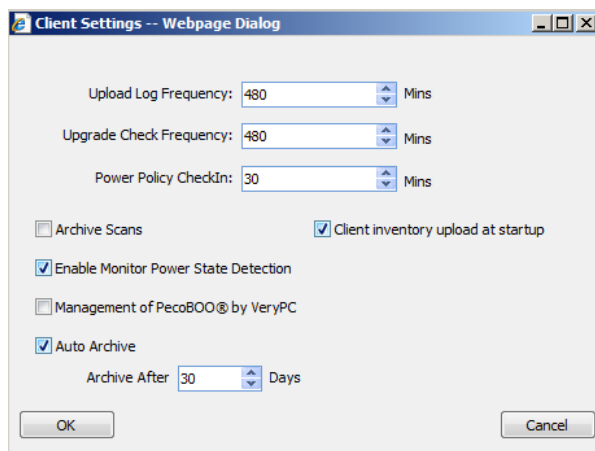
Unlike other solutions Verismic Power Manager™ does not limit you only to out-of-the-box functionality; you can extend capabilities as far as you require using command lines and scripting to control systems states for power management or just to update and control the systems in your environment for other purposes.

Critical System & Application Exemption

It may be preferred that some systems or applications are excluded from Power Management but that they are still required to collect data. To ensure these systems are protected from accidental application of policies, Verismic Power Manager™ has an exclusion mechanism to override any policies that may be applied so that systems are fully protected or that critical applications are protected while running or in use. For application protection, policies resume after the application is closed or detected as no longer being utilized.



Central Agent Behavior Control



The details of agent behavior are centrally controlled with settings automatically provisioned to systems on a defined schedule.

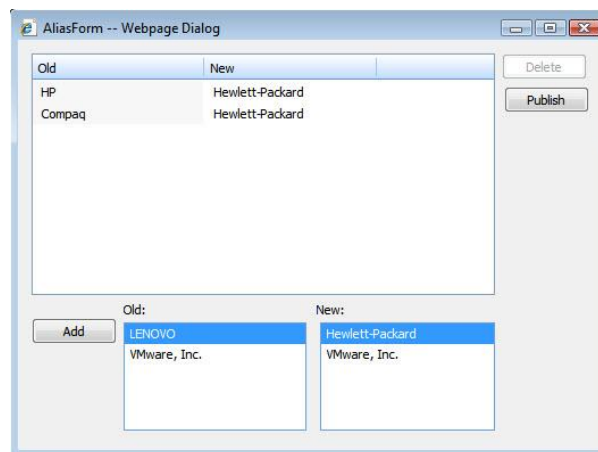
The frequency of data uploads can be configured to control the granularity of data provided as well as manage bandwidth usage in extremely large environments. Policy update frequency allows for rapid or gradual updates of systems should new policies or changed policies be applied.

Licensing automatically recovers unused licenses without deleting the historical data for retired devices.

Verismic Power Manager™ also ensures that agents are kept at the latest revision levels through automatic upgrades of the agents to the latest published version ensuring the latest functionality is present on all systems and removing the necessity for ongoing agent rollouts and upgrades.

Enforcing Data Standards

With the experience of more than 10 years of Systems Management many of the barriers to the quality of data and its presentation have been overcome including enforcing naming standards such as Manufacturers due to lack of naming conventions between the vendors. In addition, similar model types may also be combined to reduce the data variations presented.

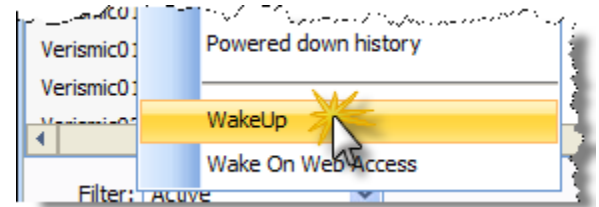


Duplicate Device ID Handling

Designed by Experts in Systems Management, Verismic Power Manager™ can automatically handle instances where the agent has been accidentally imaged. Whereas alternative systems are difficult to recover from this common scenario, Verismic Power manager™ can automatically generate new unique agent identifiers and even report on how many systems are affected and if faulty images are still in use today.

Automatic Wake Up of PCs

Verismic Power Manager™ combines the use of remote wake up technology such as Wake-On-LAN (WoL) and pre-scheduled local wake up events to ensure IT departments can continue to deliver the update services that they are used to.



By combining these technologies, Wake Up services can be provided even in environments where network or infrastructure barriers prevent use of normal WoL.



verismic
A SPARKENT COMPANY

Power Manager
Wake-On-Web

Please enter your login details below and click [OK]

Domain: verismic.com

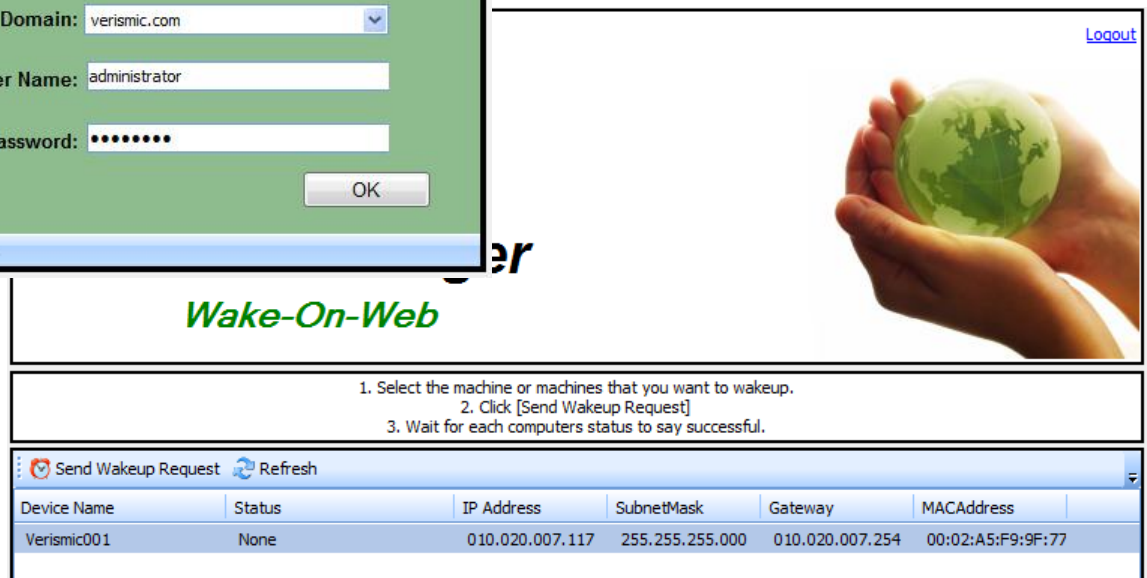
User Name: administrator

Password: ●●●●●●

OK

Version: 2.2.1007.2601

For end users or IT staff that require access to their system out of hours, waking up these systems is a simple and secure process using Power Manager's Wake-On-Web functionality.



Logout

Wake-On-Web

1. Select the machine or machines that you want to wakeup.
2. Click [Send Wakeup Request]
3. Wait for each computers status to say successful.

Send Wakeup Request Refresh

Device Name	Status	IP Address	SubnetMask	Gateway	MACAddress
Verismic001	None	010.020.007.117	255.255.255.000	010.020.007.254	00:02:A5:F9:9F:77

Simply log into the portal and wake up the devices you are authorized to access.

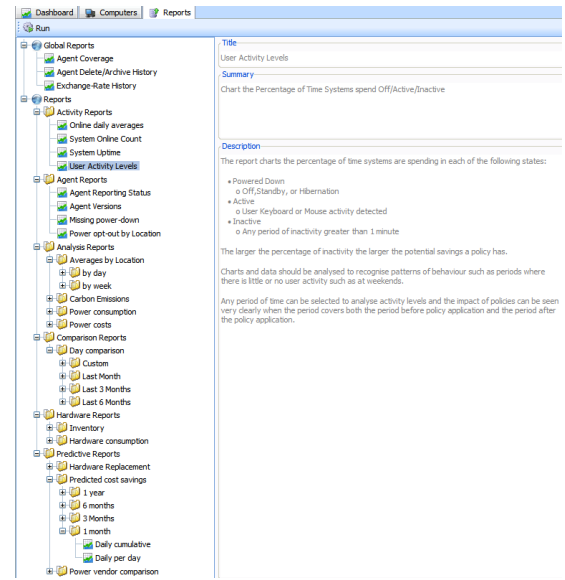
Detailed Reports

Extending the flexibility present in the Dashboard views, Verismic Power Manager™ provides approximately 80 context-sensitive reports via the Reporting interface.

Verismic Power Manager™ Reports are designed to provide clear visibility of areas including (but not limited to):

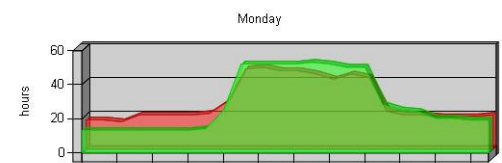
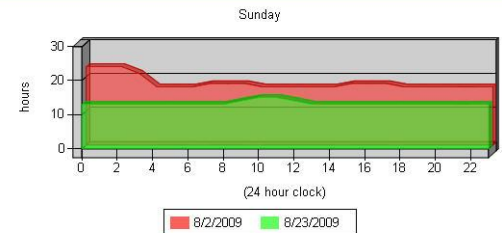
- Systems/Time Online
- Agent Coverage
- Analysis of Changes in Consumption/Cost/Emissions Over Time
- Predicted Impact of Proposed Power Policies
- Details of Opt-Outs by Location
- Analysis of Hardware Types

As with all areas of Verismic Power Manager™, reports are fully accessible through the Web-Console and security allows for users to be granted reporting rights only.



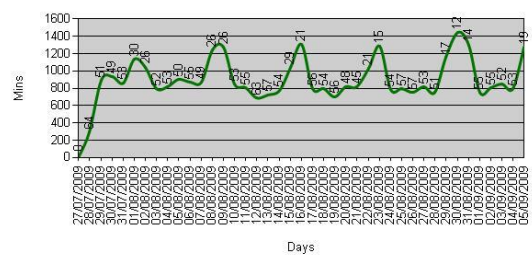
System Uptime

Displays the number of hours systems are on per hour

Historical Averages

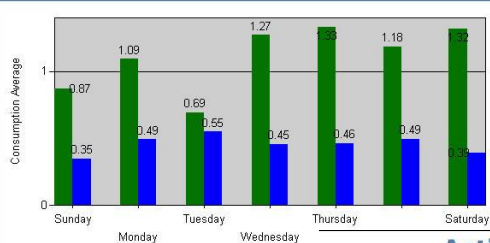
Average number of minutes devices are online per day

Date	Value (hours)	Count
27/07/2009	0.00	0
28/07/2009	4.86	64
29/07/2009	14.76	51
30/07/2009	15.49	49

Daily Consumption Average

Shows how PowerManager has affected activity per day

Activity Report

Shows charts and data of active vs inactive



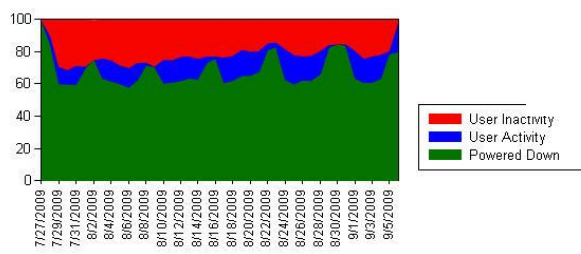
% Difference	kWh D
Sunday	-60.35%
Monday	-55.14%
Tuesday	-20.60%
Wednesday	-64.23%
Thursday	-65.26%
Friday	-58.41%
Saturday	-70.28%

Days between (27/07/2009 - 06/09/2009)

Total Inactive Hours: 16,960.80

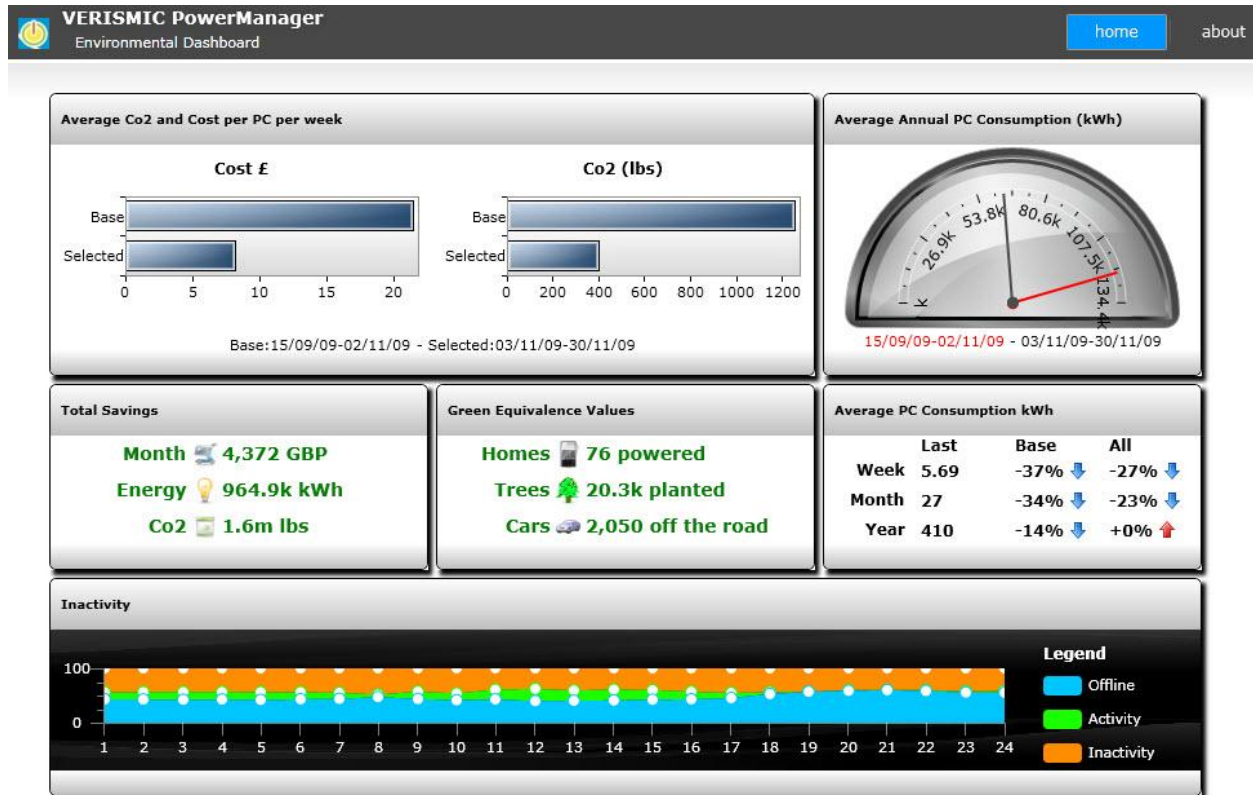
Total Computers: 79
Total Locations: 3

Activity %



Environmental Dashboard

PC Power Management helps the environment, reduces cost, and affects all those using PCs within your organization. This benefit is important to share with others in your organization to promote the success and to involve them in the initiative.



The Environmental Dashboard provides this externally consumable data in a simply understood format using measures that are clear to everyone.

PC Power Management is a great Green IT project and we should be proud to show progress.

Conclusion

Verismic Power Manager™ is designed from the beginning to manage the needs of small to enterprise environments with minimal administration overhead. Power Management as a project requires a detailed understanding of the environment and the potential impacts of planned policies; in order to ‘Master’ Power Management we need the following steps:



Monitor

Understand the environment by monitoring what is happening with your PCs and Users



Assess

Assess the information to understand the costs associated and the likely policies that would generate savings and low impact



Simulate

Analyze the impact of your policy by applying it against your historical data. Gain a real understanding of how this affects you.



Test

Apply policies to test systems and predict potential cost savings based on actual activity data



Execute

Deploy policies in a controlled manner and ensure effectiveness



Report

Evaluate the returned data to understand the impact of the applied policies and demonstrate actual savings achieved

With the advanced capabilities of Verismic Power Manager™, you and your business can understand your environment to the level of detail required to accurately plan for its Power Management needs. Most importantly, with Verismic Power Manager™ you are able to prove the benefits obtained through the application of policies and demonstrate the hard costs savings you have been able to provide to the business.

“In an age where the Climate, both Ecologically and Financially speaking, is at the forefront of our minds, Verismic Power Manager™ delivers rapid sustainable savings and a demonstrable improvement in your Green Credentials.”

Mark McGinn – Managing Director, Verismic Software